



Michael Syddall C of E Primary School

01748 818485

www.michael-syddall.n-yorks.sch.uk

www.facebook.com/michaelsyddallschool

Weekly Newsletter - Friday 06th March 2020

Diary Dates / Reminders



- Mon 9th March -** Year 3 & 4 cricket in school (don't forget PE kits).
- Tue 10th March -** Quick sticks Hockey Festival
- Tue 10th March -** Year 3 swimming (don't forget swimming kit)
- Tue 11th March-** MSSA meeting 3-4pm (see below for further details)
- Wed 11th March-** Y3 Class assembly (please see below for further information).
- Friday 13th March -** Sport Relief (details on letter sent out Thu 27th)
- Tue 17th March -** Year 5/6 Dance performance
- Tue 17th March-** Year 4 class assembly (please see below for further information).
- Tue 17th March-** Year 3 swimming
- Mon 30th March -** MSSA Easter Afternoon 3-4pm (more details to follow)
- Wed 1st April -** Easter Labyrinth (details on letter sent out 3rd March)

Class assemblies

Over the course of the next few months we will be having class led assemblies. Parents / carers are invited to join us on the day/s their children are involved. Below are the dates, all of which will start at 2:30 pm. We hope to see you there!

Wed 11th March—Y3

Wed 29th April—Y1

Tue 17th March—Y4

Wed 6th May—Foundation

Wed 25th March—Y2

MSSA Meeting

The MSSA are meeting this Tuesday at 3.10pm to discuss arrangements for the Easter Afternoon. The meeting is open to all parents / carers and it would be great to see some new faces. If you would like to help out but are not able to make the meeting let the office know and someone from the MSSA will be in touch.

Easter Labyrinth

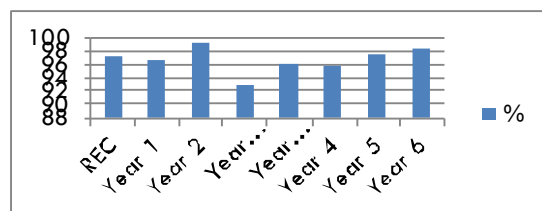
Places are available to book for the Easter Labyrinth via the 'Parents evening' website. Please visit <https://michaelsyddallcofe.parentseveningsystem.co.uk/>

CONTACT DETAILS

If anyone has changed their contact details please let the school office know so we can update our systems so you don't miss any communications from us.



WEEKLY ATTENDANCE



Well done to Year 2 who had 99.2% attendance this week. The whole school percentage was 96.8%

Parking

Please can we politely remind parents not to park on the junctions of Mowbray Road and Noels Court, or on any of the pavements. This is for the safety of both pedestrians and drivers. Thank you!

THE SCHOOL DAY

Our school day starts at 8:45am



ALL children enter school via their cloakroom door.

Key Stage 2 children (Years 3, 4, 5 and 6) can enter school from 8.35am.

Foundation Stage, Year 1 and Year 2 children enter school at 8.45am.

The school day ends at 3pm

PLAYGROUND EQUIPMENT

It is not permitted to play on any of the school play equipment outside of school hours.

Do not let children climb on the fences at the front of school, the boulder near the KS1 entrance & other decorative features



ALLERGY AWARENESS

Please be aware that we have people in school who suffer nut allergies. Please can parents be conscious of this when providing packed lunches and snacks.



Children should only be wearing stud earrings in school

For PE they should remove earrings where possible, if they are not able to remove them it is the responsibility of parents/carers to send in tape so the child can cover



Hangout Contact Number: 07756 040396

7:30am - 8:45am & 3pm - 6pm, Monday - Friday during term time